

Hawaii Interagency Council for Transit-Oriented Development

New Member Orientation

Office of Planning & Sustainable Development

January 20, 2023



Hawaii Interagency Council for Transit-Oriented Development

est. by Act 130 SLH 2016

TOD Council Members

TOD Council Members	CO-CHAIRS	OPSD	HHFDC				
	STATE	Office of GOV	DAGS	DOE	DOH		
		DHHL	DHS	DLNR	DOT		
		HCDA	HPHA	PSD	STADIUM AUTHORITY	UH	
	LEGISLATURE	SENATE	HOUSE				
	COUNTIES	CITY	HAWAII	KAUAI	MAUI		
	PARTNER REPS	DEVELOPERS	AFF HOUSING ADVOCATE	BUSINESS			
	EX-OFFICIO	US HUD					



Hawaii Interagency Council for Transit-Oriented Development



- **ADVISORY ROLE—Primary responsibilities:**
 - ▶ Strategic Plan for TOD statewide, including mixed-use, affordable & rental housing
 - ▶ Facilitate funding for TOD - TOD Infrastructure Finance and Delivery Strategy
 - ▶ Support and monitor TOD implementation and coordinate interagency efforts
 - ▶ Recommend needed policy and statutory changes
 - ▶ Review/advocate for CIP requests for TOD on State lands
- **On Neighbor Islands**, promote Smart Growth & TOD principles in provision of State facilities & services to encourage quality growth & vibrant mixed-use neighborhoods
- **Sunshine Law.** We adhere to all Sunshine Law practices.

SUPPORT

PLAN

IMPLEMENT

TOD Council Community Members and Agency Representatives

Role:

- ✓ Advocate for your area of interest
- ✓ Find ways to collaborate on projects
- ✓ Provide information and serve as a resource
- ✓ Participate in council meetings and/or work groups
- ✓ Suggest topic ideas or guest speaker(s)

SUPPORT

PLAN

IMPLEMENT

TOD Council Leadership

- Scott Glenn (Co-Chair) – Director, OPSD
 - ❖ Katia Balassiano (Co-Chair Alternate) – Planning Program Administrator, OPSD
- Denise Iseri-Matsubara (Co-Chair) – Executive Director, HHFDC
 - ❖ Dean Minakami (Co-Chair Alternate) - Development Branch Chief, HHFDC

TOD Council Staff - Office of Planning/Land Use Division

Katia Balassiano – Planning Program Administrator
katia.balassiano@hawaii.gov, 808-587-2885

Ruby Edwards – Planner VI
ruby.m.edwards@hawaii.gov, 808-587-2817

Harrison Rue – TOD Program Manager
harrison.rue@hawaii.gov, 808-587-2898

Carl Miura – TOD Council Coordinator
carl.y.miura@hawaii.gov, 808-587-2805

•

SUPPORT

PLAN

IMPLEMENT

TOD Council Meeting Schedule for 2023

Friday, January 20, 2023

Friday, February 17, 2023

March 2023 – NO MEETING

Friday, April 21, 2023

May 2023 – NO MEETING

Friday, June 16, 2023

Friday, July 21, 2023

August 2023 – NO MEETING

Friday, September 15, 2021

(tentative)

October 2023 – NO MEETING

Friday, November 17, 2023

December 2023 – NO MEETING

Friday January 19, 2024



WAILUKU OFFICE BUILDING

- Address: 70 South High Street Wailuku, HI 9679
- Tax Map Key: (2) 3-4-013014
- Project Area: Approximately 0.425 acres
- County Zoning: B-3 – Business-Central
- Proposal: An office building for the Department of Accounting and General Services (DAGS)
- Proposed Floor Area: Approximately 40,000-50,000 sq. ft.
- Proposed Parking: Approximately 100 parking spaces



State Strategic Plan for Transit-Oriented Development

PLAN CONTENT

1. **Vision** for TOD & State Investments
2. **TOD Implementation/Investment Strategy**
3. **TOD Opportunities** in Each County
4. **TOD/Investment Tools** Needed
5. **Near-term** TOD Implementation & Investments
6. **TOD Project Fact Sheets:**
Oahu, Neighbor Islands

State of Hawaii

Strategic Plan for Transit-Oriented Development

Hawaii Interagency Council for Transit-Oriented Development

Prepared Pursuant to Act 130, Session Laws of Hawaii 2016 by
Office of Planning

and
Hawaii Housing Finance and Development Corporation
Department of Business, Economic Development and Tourism
State of Hawaii

December 2017 (Revised August 2018)



TOD Strategic Plan

VISION for State Investments in Livable Communities

- **Use of State facilities & properties to anchor & catalyze other public & private investments in livable, complete communities integrated with public transit**

compact, dense, opportunity-rich

walkable, pedestrian- & bike-friendly

affordable housing

mixed-use development

multi-modal transportation options

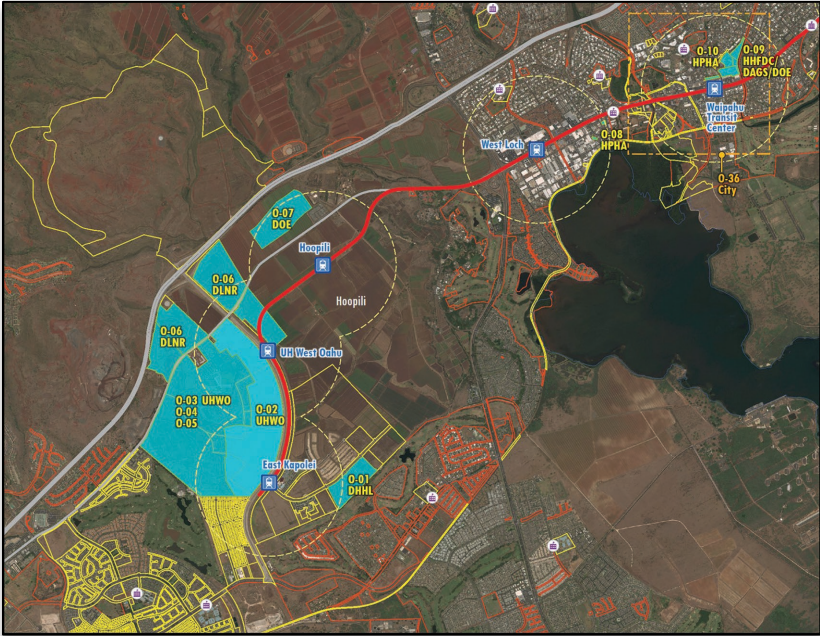
proximity/access to jobs, services & necessities of daily life



Strategic Plan & TOD Implementation—Oahu

OPPORTUNITIES ► TOD COMMUNITIES

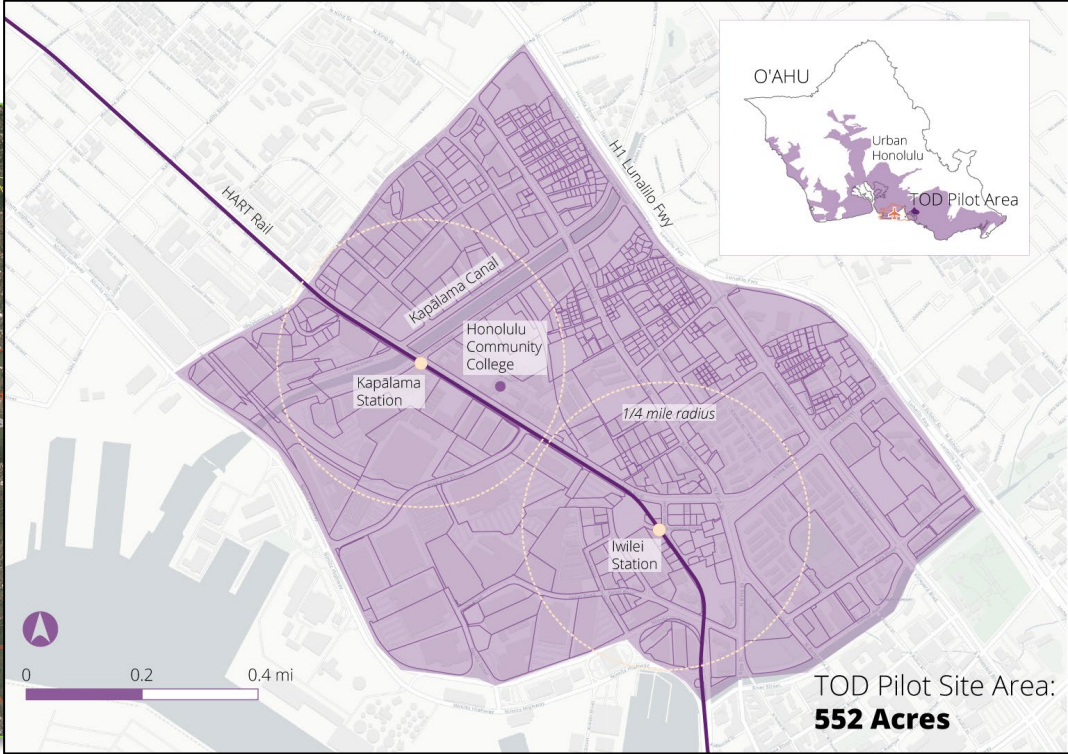
Priority Areas



East Kapolei



Halawa-Stadium



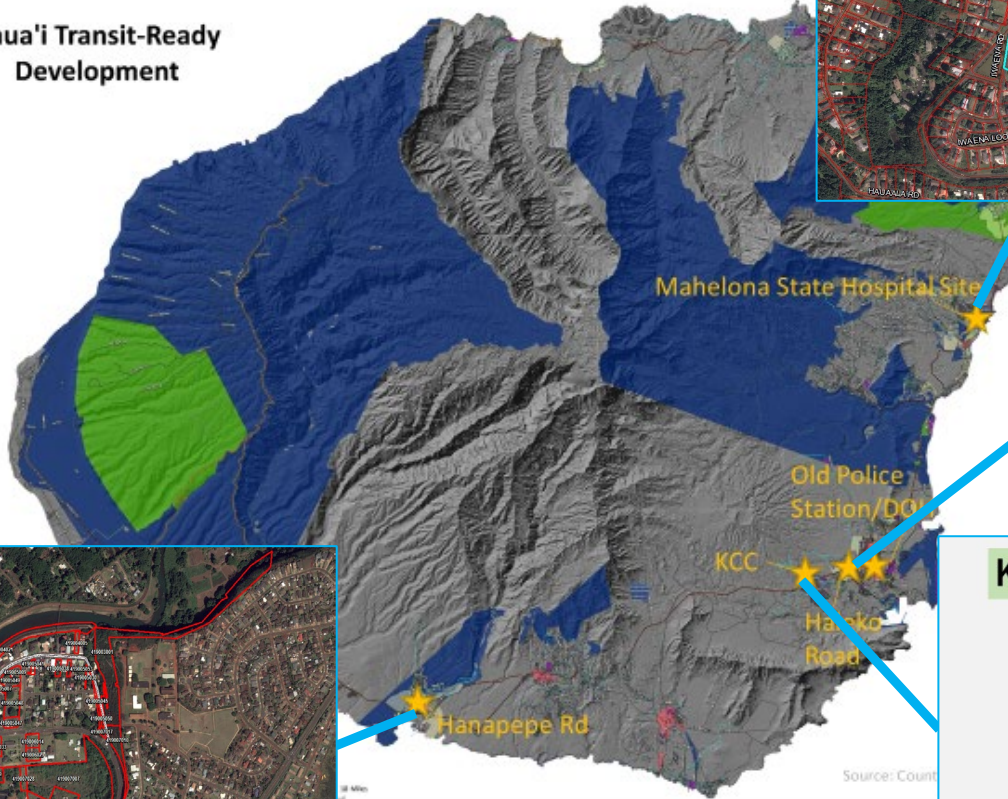
Iwilei-Kapalama

TOD Pilot Site Area:
552 Acres

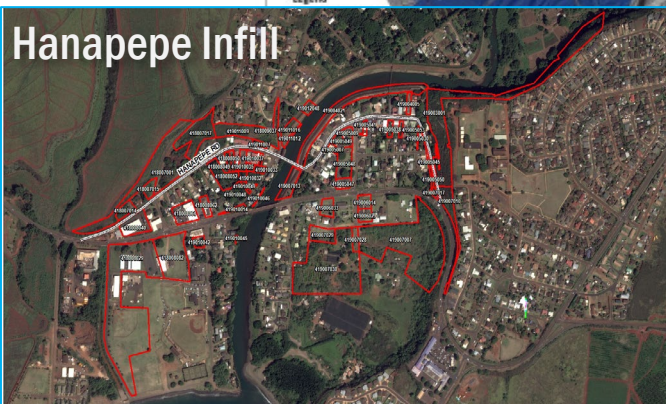
Strat Plan Neighbor Island TOD Opportunities: Transit Hubs Strategy

Kauai County

Kaua'i Transit-Ready
Development



Haleko Road/Pua Loke St, Lihu'e



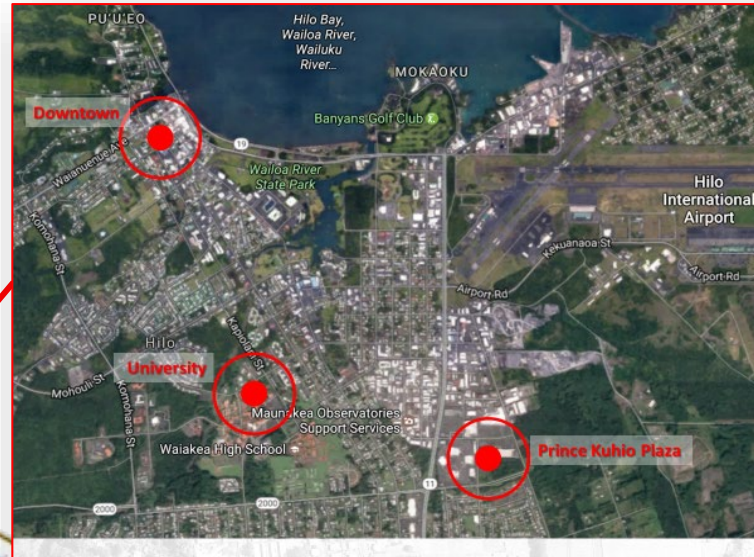
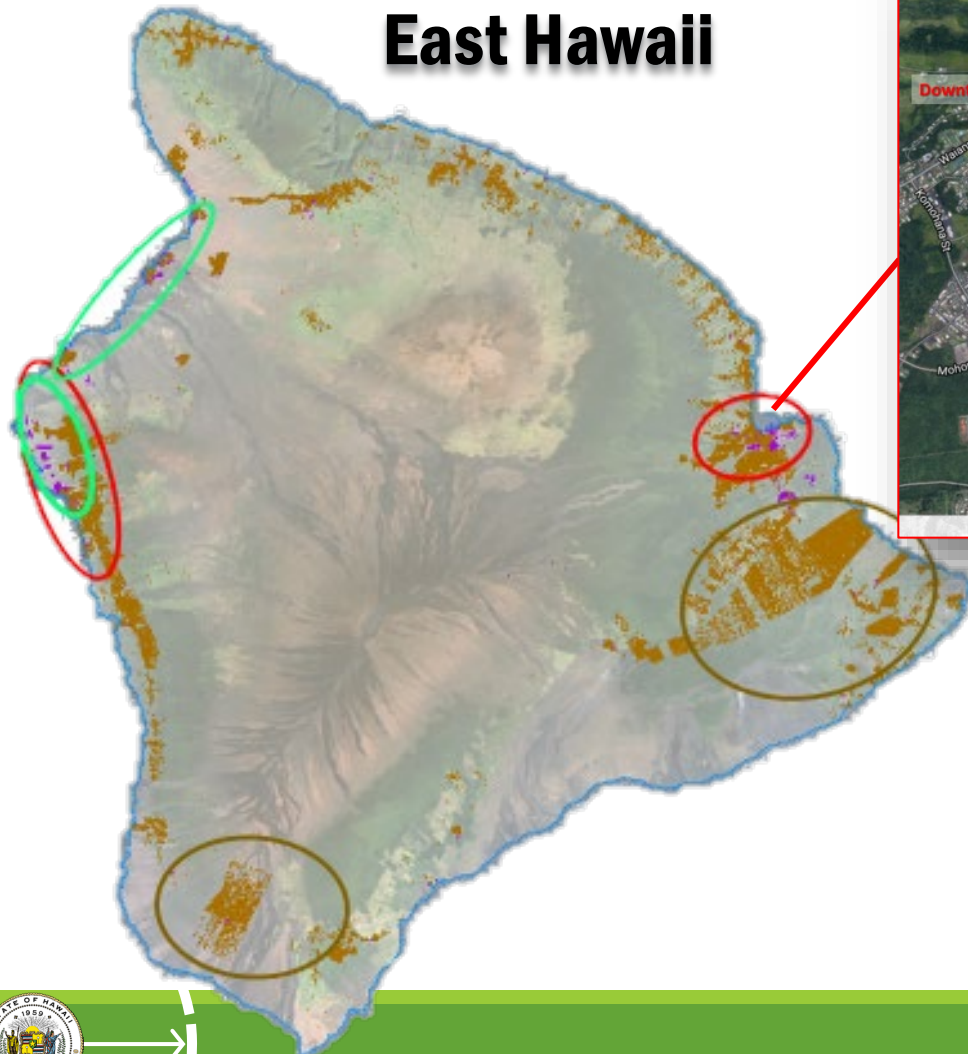
Hanapepe Infill

Kauai Community College, Puhi



Strat Plan Neighbor Island TOD Opportunities: Transit Hubs Strategy

East Hawaii



Prince Kuhio Plaza Hub Area



Downtown Hilo Multimodal Master Plan

Public Draft - February, 2017



University of Hawaii Hilo



Strat Plan Neighbor Island TOD Opportunities: Transit Hubs Strategy

Kailua Village (Regional Center TOD)



Honokohau Village (Regional Center TOD)



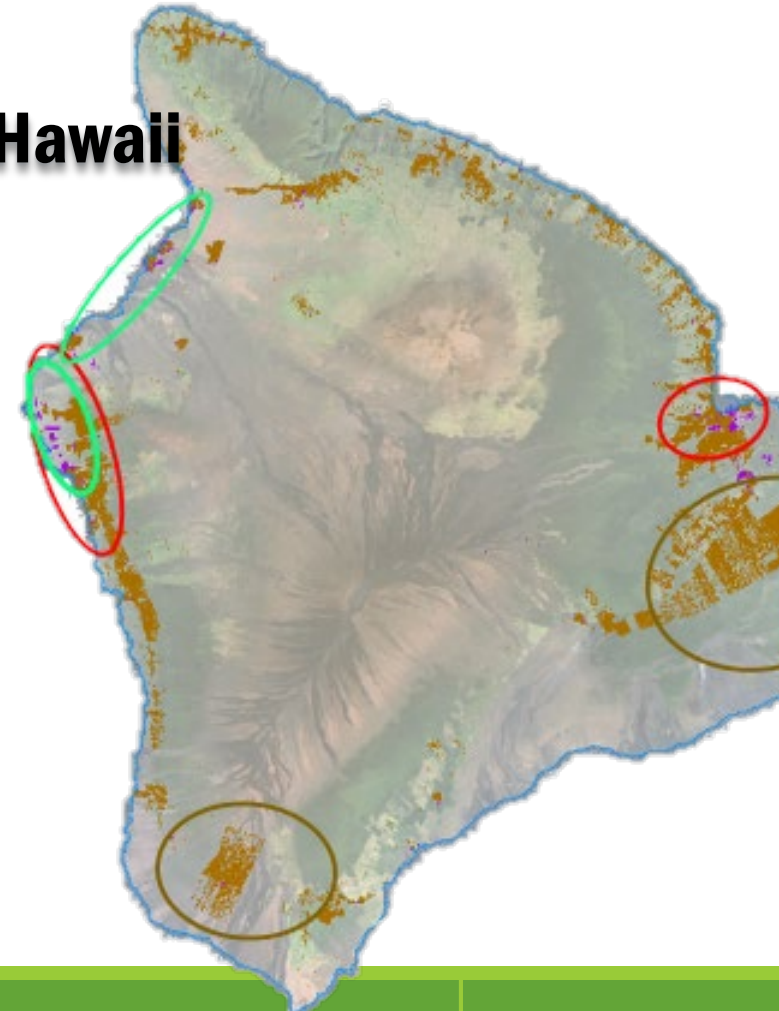
Kamakana Village at Keahuolu
(Neighborhood Center TOD)



Ane Keohokalole Hwy multimodal trunk
line accessing GOAs



West Hawaii

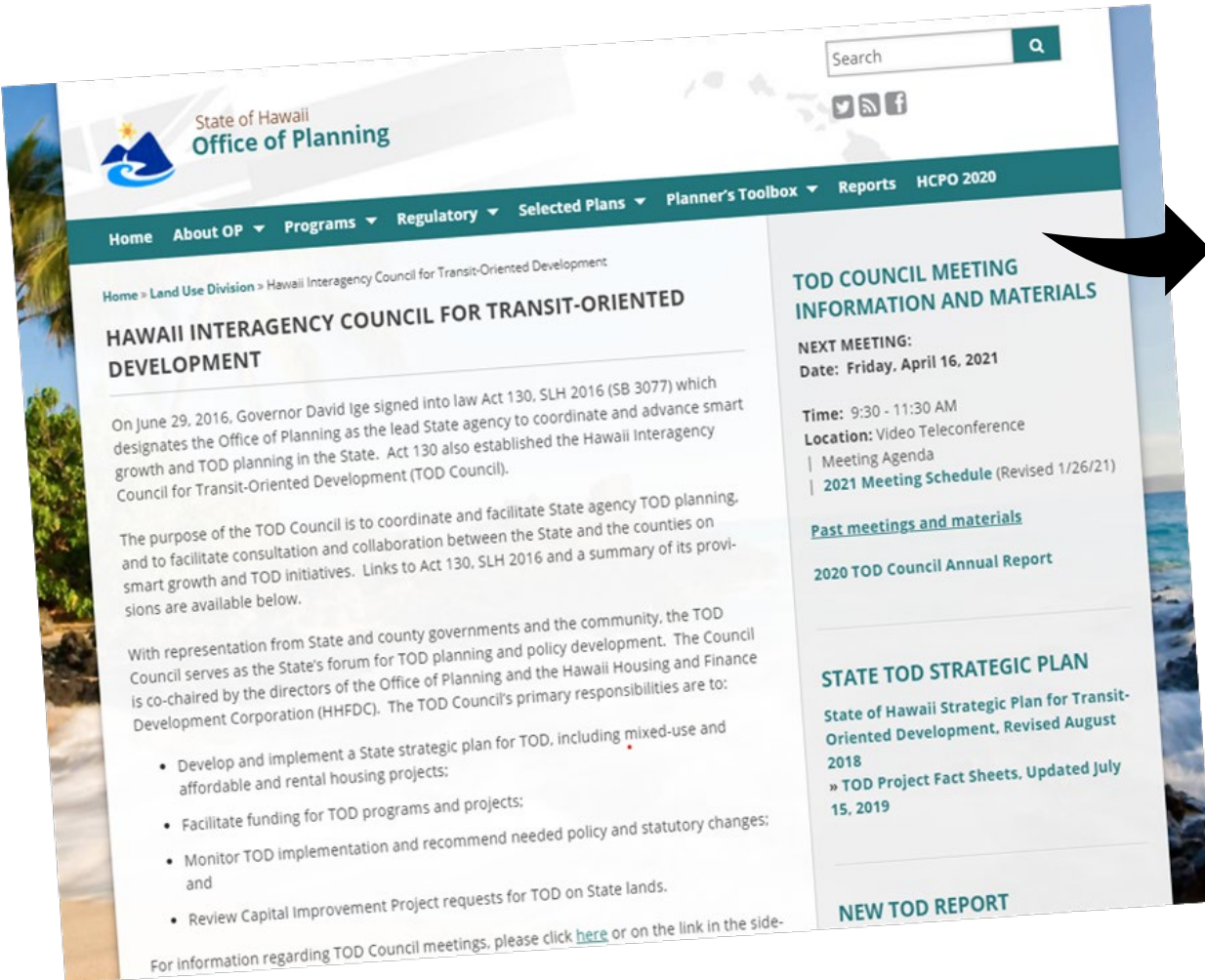


Resources for TOD Council Information

planning.hawaii.gov/lud/state-tod/

Or search “TOD Council Hawaii”

1. State TOD Strategic Plan for TOD - 2018
2. State TOD Planning & Implementation Project, Island of O‘ahu - 2020
3. **TOD Infrastructure Finance and Delivery Strategy (statewide, four pilot areas) – 2022-23**
4. 2022 Annual Report
5. Agendas, Minutes, PowerPoint Presentations
6. Project Fact Sheets



What are your 2023 goals?

- For your agency, county, or statewide?
- For the TOD Council and staff?
- How can we help you reach your goals?
- What are the top priority actions



SUPPORT

PLAN

IMPLEMENT

Mahalo!

State of Hawaii Transit-Oriented Development

planning.hawaii.gov/lud/state-tod/

